



# ESF5 Line

Foot or manual operated  
Suction pumps



OPERATING THEATRE



# ESF5-170 & ESF5-170/B

## FOOT OPERATED SUCTION PUMPS

- Manufactured from ABS plastic material.
- Light weight and easy to clean.
- It is constantly working-mechanically by foot or hand pedal.
- Adjustable suction power up to 0,45 bar - 190 mmHg.
- Sterilizable jar, with float valve to prevents overflowing occurring.
- 1 disposable filter (included)
- Size 260 x 180 x 240 H. mm.
- Weight 1,6kg

Cod.	Descr.
<b>ESF5-170</b>	Suction pump with 1L jar
<b>ESF5-170/10</b>	Carrying case



- Working methods: electric or manual.
- Made in ABS.
- 50 lt./min x 30kg (hand or foot control) or 12lt./min (12 V continuous electric aspiration) with a 3A lead rechargeable accumulator.
- 30 minutes continuous autonomy.
- LED displaying recharge level.
- The aspiration is adjustable up to 0,50 bar - 380 mmHg.
- It comes with 1 disposable filter
- 1 battery charger (included)
- Weight 2kg

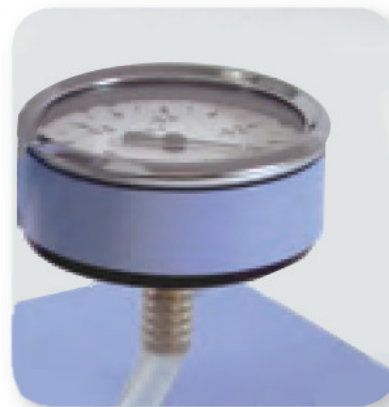
Cod.	Descr.
<b>ESF5-170/B</b>	Suction pump with 1L jar
<b>ESF5-170/10</b>	Housse de transport

# ESF5-175

## HIGH FLOW FOOT OPERATED SUCTION PUMP

- Light weight and easy operation
- It can be used in many different situations: areas with no electricity, at home and other emergency occasions.
- Single-way valve not producing positive pressure, safe and reliable.
- Metallic plate, safe and suitable for transportation and use.
- Dimensions 320 x 230 x 280 (H) mm
- Weight 4 kg
- Suction power  $\geq 70$  l/min
- Max vacuum 0,90 bar
- Included accessories:
  - Efficient pump for instantly vacuum
  - 1 liter autoclavable Jar
  - 1 Autoclavable Silicone Tube Set - (0.4 m + 2 m)
  - 1 Antibacterial filter
  - 1  $\varnothing$  63mm vacuum gauge

Cod.	Descr.
<b>ESF5-175</b>	Suction pump with 1L jar
<b>ESF5-0001</b>	1L Autoclavable Makrolon jar
<b>ESF5-0016</b>	Disposable filter
<b>ESF5-00079</b>	Autoclavable Tube Set $\varnothing$ 8 x 14 mm - 0,35+2 mm





# ESF5-151

9A 9F ; 9B7MA 5BI 5@GI 7H=CB 'DI AD



- Functional, safe, portable, powerful and economic suction pump that works by one hand.
- Thanks to its small sizes it is suitable to be carried in every emergency bag or in ambulance.
- In emergency situations it allows the airways suction of secretions with safety, quickness and efficacy.
- The kit supplied is suitable for all first aids when electrical connection is not available.
- Dimensions 12,5 x 6 x 16 H (cm)
- Weight 192 g
- Suction power  $\geq 20$  l/min
- Max vacuum 0,25 bar
- Included accessories:
  - 1 reusable handle
  - 1 disposable suction jar of 300 ml
  - 1 Adult and child flexible and disposable tubes

Cod.	Descr.
<b>ESF5-151</b>	Suction pump with 1L jar
<b>ESF5-151/1</b>	1L Autoclavable Makrolon jar
<b>ESF5-151/2</b>	Disposable Tube Set adult and child size



ESSE3 srl, Via Garibaldi 30  
14022 Castelnuovo D.B. (AT)  
Tel +39 011 99 27 706  
Fax +39 011 99 27 506  
e-mail [esse3@chierinet.it](mailto:esse3@chierinet.it)  
web: [www.esse3-medical.com](http://www.esse3-medical.com)

